

# Data sheet

Part number : BXMW115HGSE-300-TR

(Wide color gamut type)



2011/65/EU, (EU)2015/863  
10 Substances regulation compliant



Lead-free solder heat resistant product

Package	SMD Top view Package, White color emitting LED Outer dimension 3.2 x 1.4 x 0.58mm ( L x W x H )
Product features	<ul style="list-style-type: none"> <li>• Automotive quality standard: AEC-Q102 compliant</li> <li>• Product moisture resistance level (moisture sensitivity level/MSL): 2a</li> <li>• Wide color gamut LED</li> <li>• Chromaticity coordinates <math>x = 0.2770</math> <math>y = 0.2600</math> @80mA</li> <li>• Operating temperature : -40 to +100°C</li> <li>• RoHS:2011/65/EU, (EU)2015/863 compliant</li> <li>• Lead-free soldering compatible</li> </ul>

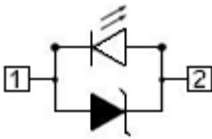
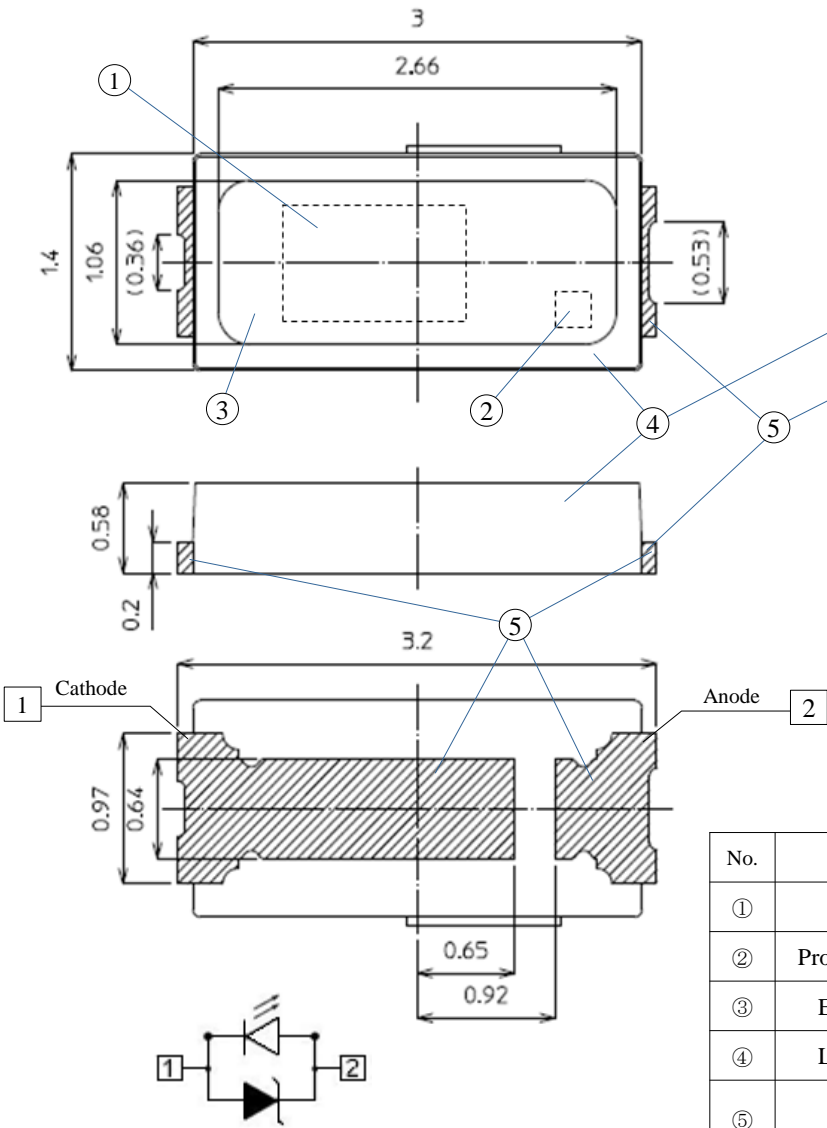
## Recommended applications

- Light source for automotive interior (display) backlight

Outline dimensions

BXMW115HGSE-300-TR  
(Wide color gamut type)

Unit : mm  
Weight : 7.7mg  
Tolerance : ±0.1

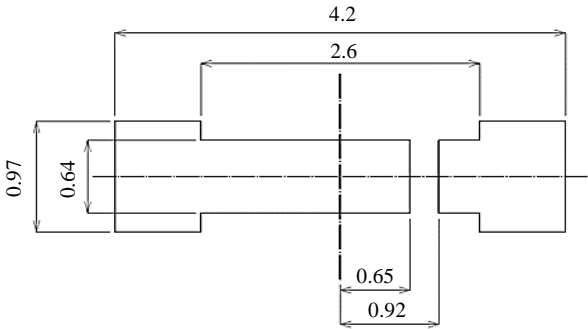


Inside circuit

No.	Part name	Material	Qty.
①	LED die	InGaN	1
②	Protection diode	Si	1
③	Encapsulant	Silicone resin	1
④	Lamp house	White resin	1
⑤	Electrode	Ag plating	Cathode: 1 Anode: 1

Recommended soldering pattern

Unit : mm



Specifications

BXMW115HGSE-300-TR  
(Wide color gamut type)

【Product overview】

Die material	InGaN
Emitting color	White (Blue chip + Phosphor1 + Phosphor2 )
Resin color 【Emitting area】	Diffused pale yellow
Resin color 【Lamp housing】	White

【Absolute maximum ratings】

(Ta=25℃)

Item	Symbol	Maximum ratings	Units
Power dissipation	P <sub>d</sub>	578	mW
Forward current	I <sub>F</sub>	170	mA
Repetitive peak forward current 【0.5ms, 1/20 duty】	I <sub>FRM</sub>	400	mA
I <sub>F</sub> derate linearly 【Ts=from 110℃】	△I <sub>F</sub>	11.33	mA/℃
I <sub>FRM</sub> derate linearly 【Ts=from 110℃】	△I <sub>FRM</sub>	26.67	mA/℃
Reverse current	I <sub>R</sub>	85	mA
Operating temperature	T <sub>opr</sub>	-40 to +100	℃
Storage temperature	T <sub>stg</sub>	-40 to +120	℃
Junction temperature	T <sub>j</sub>	125	℃
Electrostatic discharge threshold 【HBM】	ESD	5,000	V
Soldering temperature 【Reflow soldering】	T <sub>sld</sub>	260	℃

Note1

Note2

Note1 ESD testing method : JEITA ED-4701/302A(304A)／IEC 60810 Human Body Model(HBM) 1.5kΩ,100pF

Note2 Please refer to page 10, soldering conditions.

【Thermal characteristics】

(Ta=25℃, I<sub>F</sub>=120mA)

Item	Symbol	Typ.	Units
Thermal resistance 【Junction - solder point】	R <sub>th(j-s)</sub>	15	℃/W

Specifications

BXMW115HGSE-300-TR  
(Wide color gamut type)

【Electro-optical characteristics】

(Ta=25℃)

Item	Symbol	Conditions	Min.	Typ.	Max.	Units	
Forward voltage	V <sub>F</sub>	I <sub>F</sub> = 80mA	2.7	2.9	3.1	V	Note3
Luminous flux	Φ <sub>V</sub>	I <sub>F</sub> = 80mA	26.1	31.5	38.3	lm	Note4
Chromaticity coordinates	x	I <sub>F</sub> = 80mA	-	0.2770	-		Note5,6
	y		-	0.2600	-		
Half Intensity angle	Δθ <sub>X</sub>	I <sub>F</sub> = 80mA	-	115	-	deg.	Note7
	Δθ <sub>Y</sub>		-	115	-		
Peak avelength (Blue hip)	λ <sub>P</sub>	I <sub>F</sub> = 80mA	-	447.5	-	nm	
Peak wavelength (Phosphor 1)	λ <sub>P</sub>	I <sub>F</sub> = 80mA	-	540	-	nm	
Peak wavelength (Phosphor 2)	λ <sub>P</sub>	I <sub>F</sub> = 80mA	-	631	-	nm	

- Note 3,4,5 Please refer to the attached sheets, each sorting chart.
- Note 6 Chromaticity coordinates ; x and y according to CIE1931
- Note 7 Viewing Angle at 50% I<sub>V</sub>, Δθ<sub>X</sub> ; Housing long side axis, Δθ<sub>Y</sub> ; Housing short side axis

【Sorting chart for luminous flux】

LEDs shall be sorted out into the following chart and each rank parts shall be packed separately when shipping.

Rank	Luminous flux Φ <sub>V</sub> (lm)		Conditions
	Min.	Max.	
BL	26.1	28.7	I <sub>F</sub> = 80mA Ta = 25℃
BM	28.7	31.6	
BN	31.6	34.8	
BP	34.8	38.3	

Note Tolerance: ±10%

【Sorting chart for forward voltage】

LEDs shall be sorted out into the following chart and each rank parts shall be packed separately when shipping.

Rank	Forward voltage V <sub>F</sub> (V)		Conditions
	Min.	Max.	
B	2.70	2.90	I <sub>F</sub> = 80mA Ta = 25℃
C	2.90	3.10	

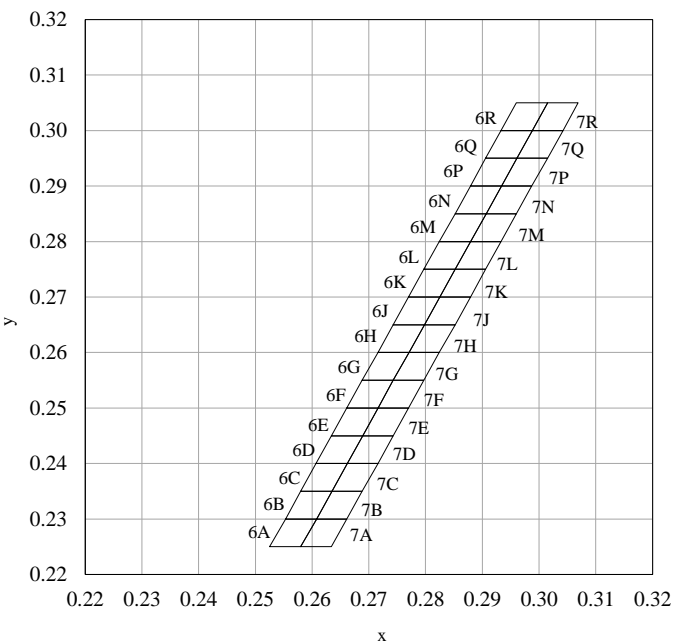
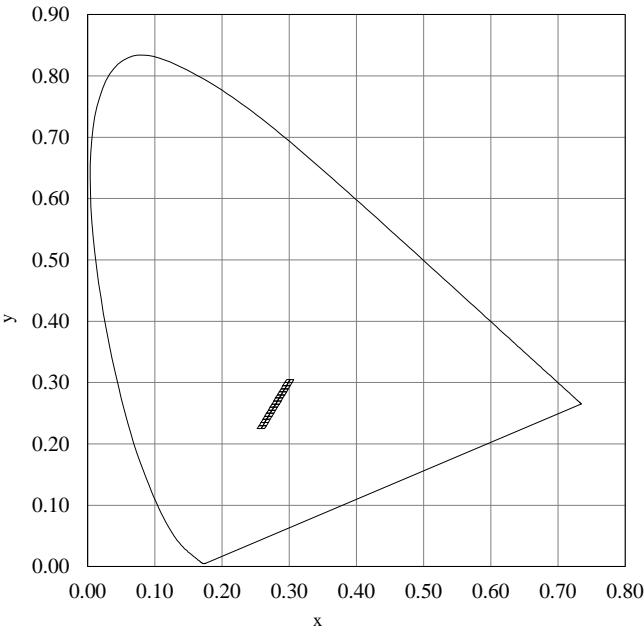
Note Tolerance : ±0.1V

Specifications

BXMW115HGSE-300-TR  
(Wide color gamut type)

【Sorting chart for chromaticity coordinates】

LEDs shall be sorted out into the following chart and each rank parts shall be packed separately when shipping.



Specifications

BXMW115HGSE-300-TR  
(Wide color gamut type)

【Sorting chart for chromaticity coordinates】

LEDs shall be sorted out into the following chart and each rank parts shall be packed separately when shipping.

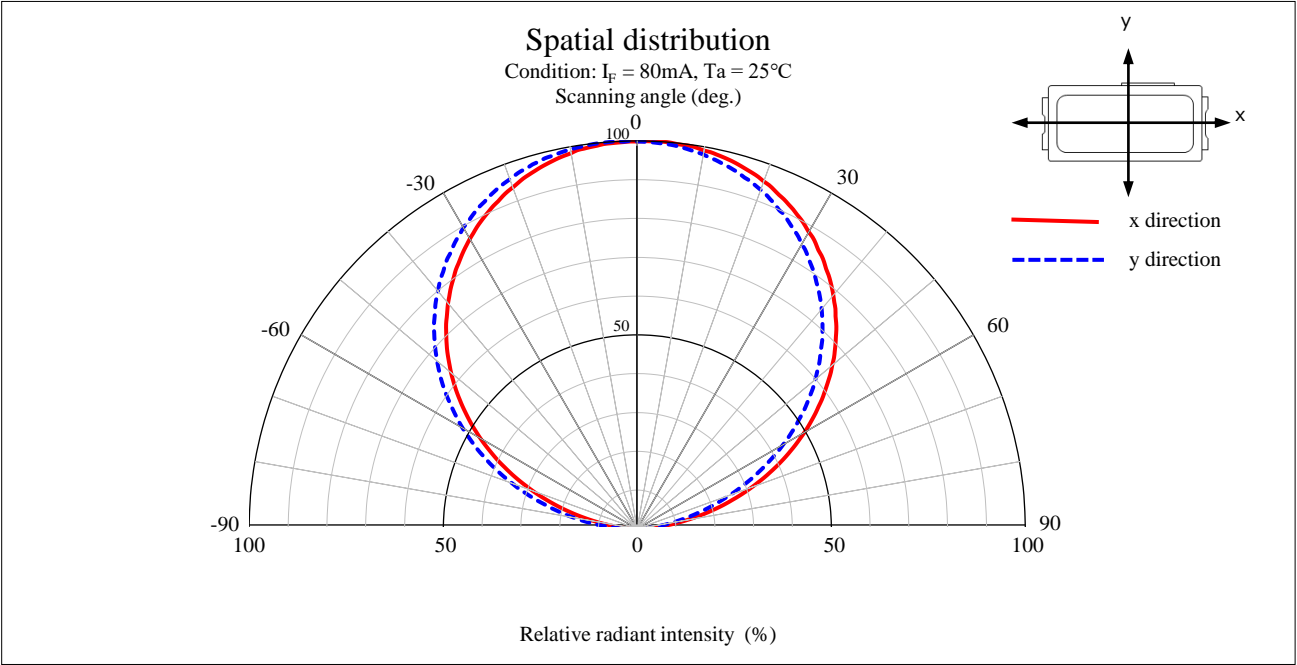
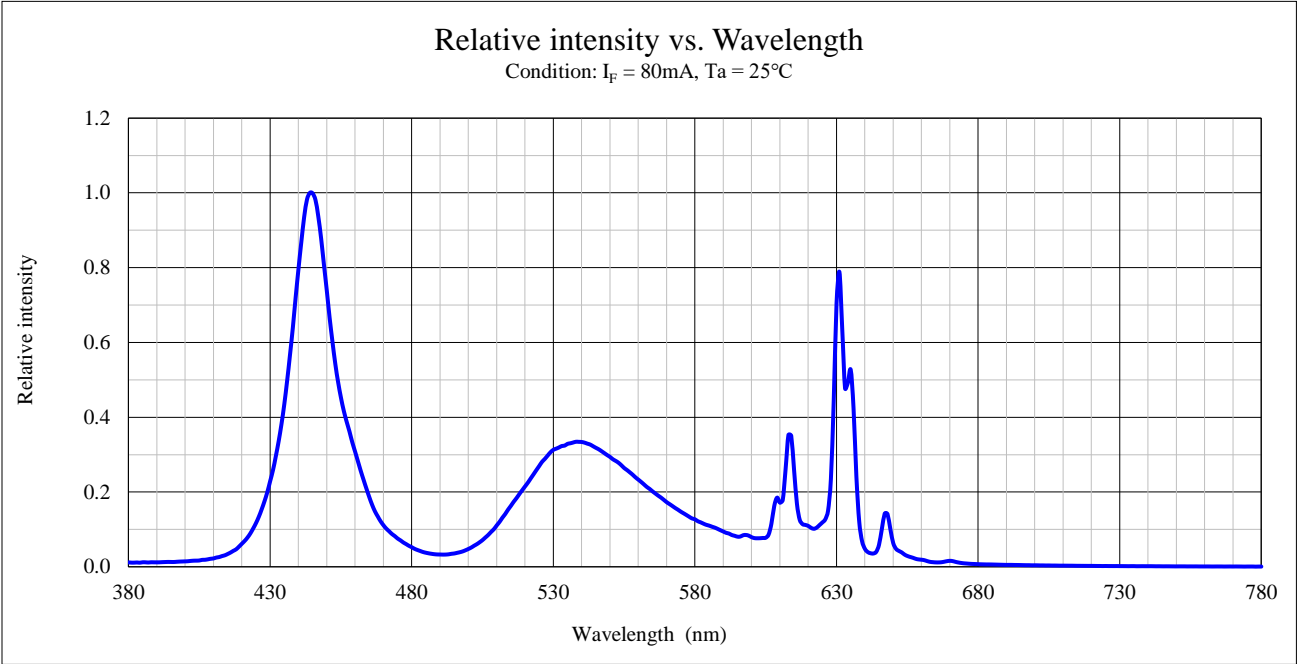
(If=80mA, Ta=25℃)

Rank	Point 1		Point 2		Point 3		Point 4	
	x	y	x	y	x	y	x	y
6A	0.2525	0.2250	0.2553	0.2300	0.2608	0.2300	0.2580	0.2250
6B	0.2553	0.2300	0.2580	0.2350	0.2635	0.2350	0.2608	0.2300
6C	0.2580	0.2350	0.2607	0.2400	0.2662	0.2400	0.2635	0.2350
6D	0.2607	0.2400	0.2634	0.2450	0.2689	0.2450	0.2662	0.2400
6E	0.2634	0.2450	0.2661	0.2500	0.2716	0.2500	0.2689	0.2450
6F	0.2661	0.2500	0.2688	0.2550	0.2743	0.2550	0.2716	0.2500
6G	0.2688	0.2550	0.2716	0.2600	0.2771	0.2600	0.2743	0.2550
6H	0.2716	0.2600	0.2743	0.2650	0.2798	0.2650	0.2771	0.2600
6J	0.2743	0.2650	0.2770	0.2700	0.2825	0.2700	0.2798	0.2650
6K	0.2770	0.2700	0.2797	0.2750	0.2852	0.2750	0.2825	0.2700
6L	0.2797	0.2750	0.2824	0.2800	0.2879	0.2800	0.2852	0.2750
6M	0.2824	0.2800	0.2852	0.2850	0.2907	0.2850	0.2879	0.2800
6N	0.2852	0.2850	0.2879	0.2900	0.2934	0.2900	0.2907	0.2850
6P	0.2879	0.2900	0.2906	0.2950	0.2961	0.2950	0.2934	0.2900
6Q	0.2906	0.2950	0.2933	0.3000	0.2988	0.3000	0.2961	0.2950
6R	0.2933	0.3000	0.2960	0.3050	0.3015	0.3050	0.2988	0.3000
7A	0.2580	0.2250	0.2608	0.2300	0.2661	0.2300	0.2634	0.2250
7B	0.2608	0.2300	0.2635	0.2350	0.2688	0.2350	0.2661	0.2300
7C	0.2635	0.2350	0.2662	0.2400	0.2716	0.2400	0.2688	0.2350
7D	0.2662	0.2400	0.2689	0.2450	0.2743	0.2450	0.2716	0.2400
7E	0.2689	0.2450	0.2716	0.2500	0.2770	0.2500	0.2743	0.2450
7F	0.2716	0.2500	0.2743	0.2550	0.2797	0.2550	0.2770	0.2500
7G	0.2743	0.2550	0.2771	0.2600	0.2824	0.2600	0.2797	0.2550
7H	0.2771	0.2600	0.2798	0.2650	0.2852	0.2650	0.2824	0.2600
7J	0.2798	0.2650	0.2825	0.2700	0.2879	0.2700	0.2852	0.2650
7K	0.2825	0.2700	0.2852	0.2750	0.2906	0.2750	0.2879	0.2700
7L	0.2852	0.2750	0.2879	0.2800	0.2933	0.2800	0.2906	0.2750
7M	0.2879	0.2800	0.2907	0.2850	0.2960	0.2850	0.2933	0.2800
7N	0.2907	0.2850	0.2934	0.2900	0.2987	0.2900	0.2960	0.2850
7P	0.2934	0.2900	0.2961	0.2950	0.3015	0.2950	0.2987	0.2900
7Q	0.2961	0.2950	0.2988	0.3000	0.3042	0.3000	0.3015	0.2950
7R	0.2988	0.3000	0.3015	0.3050	0.3069	0.3050	0.3042	0.3000

Note      Tolerance : ±0.01

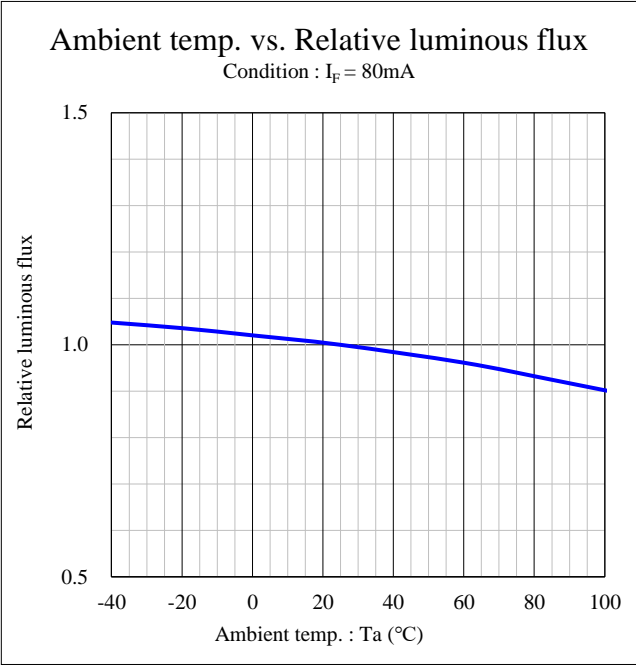
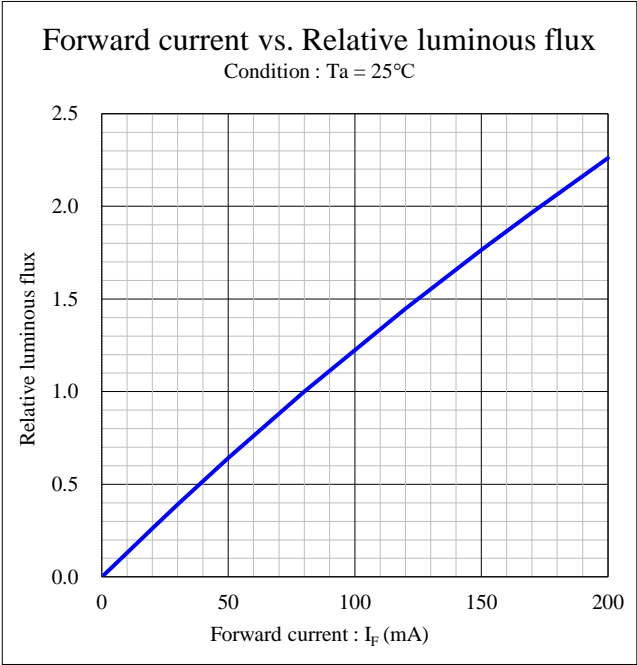
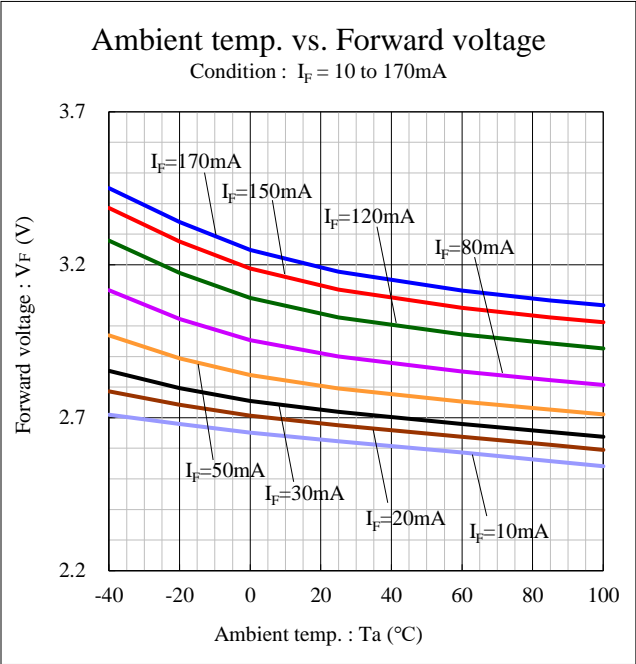
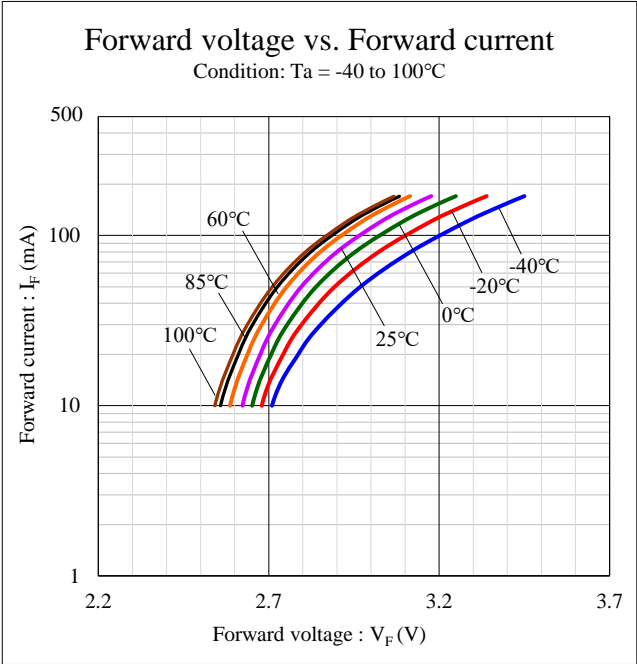
Technical Data

BXMW115HGSE-300-TR  
(Wide color gamut type)



Technical Data

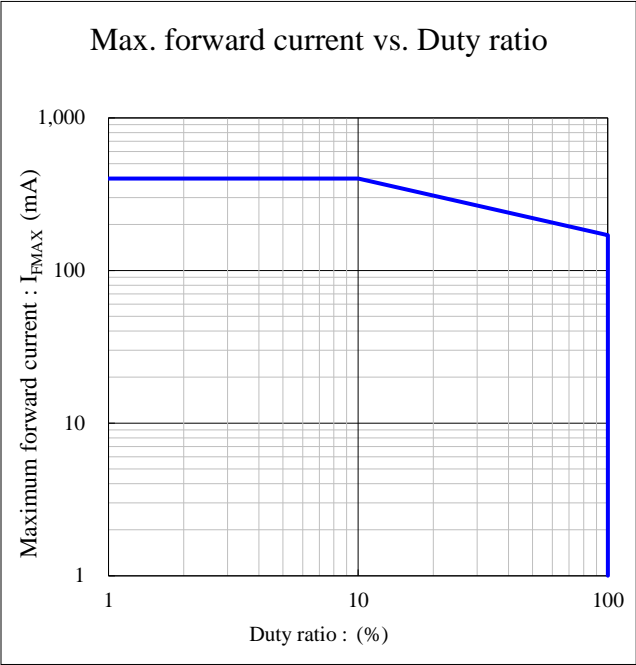
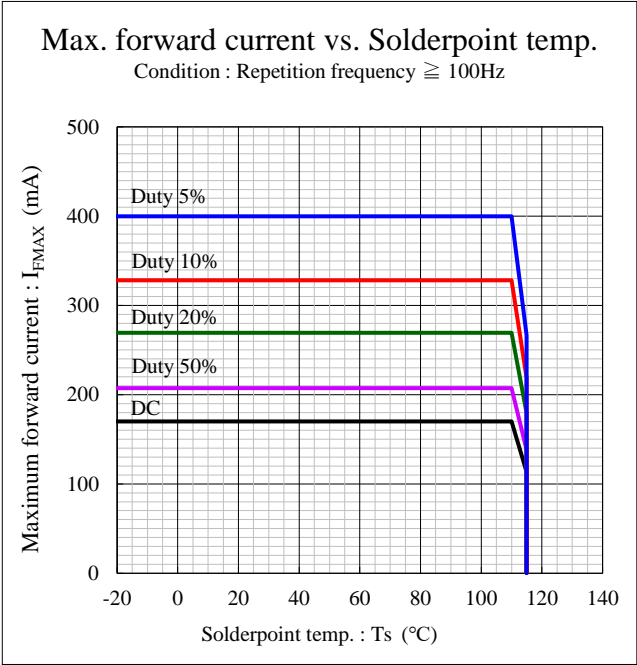
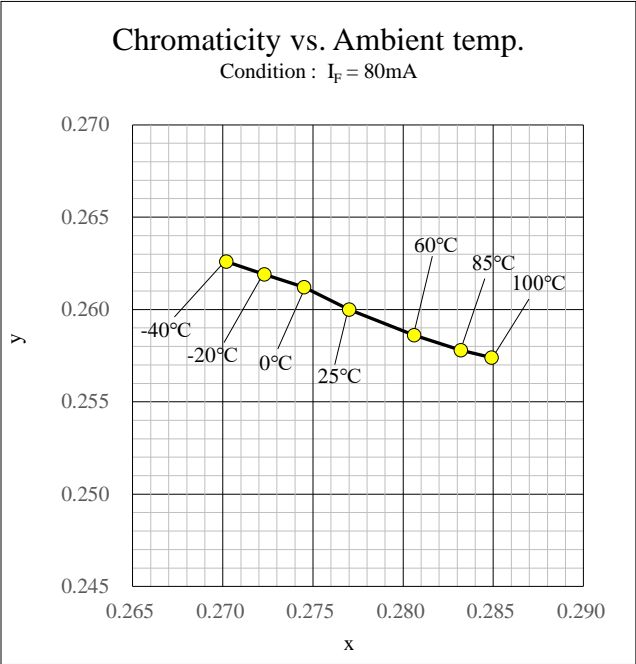
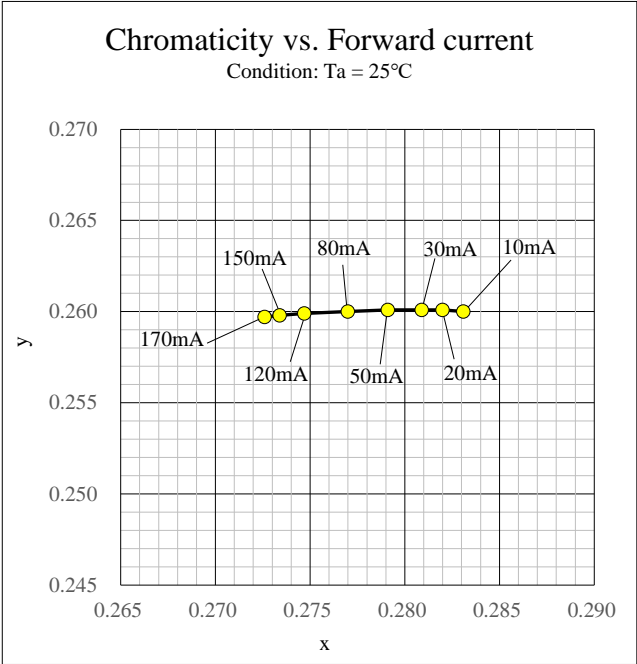
BXMW115HGSE-300-TR  
(Wide color gamut type)





Technical Data

BXMW115HGSE-300-TR  
(Wide color gamut type)



# Soldering condition

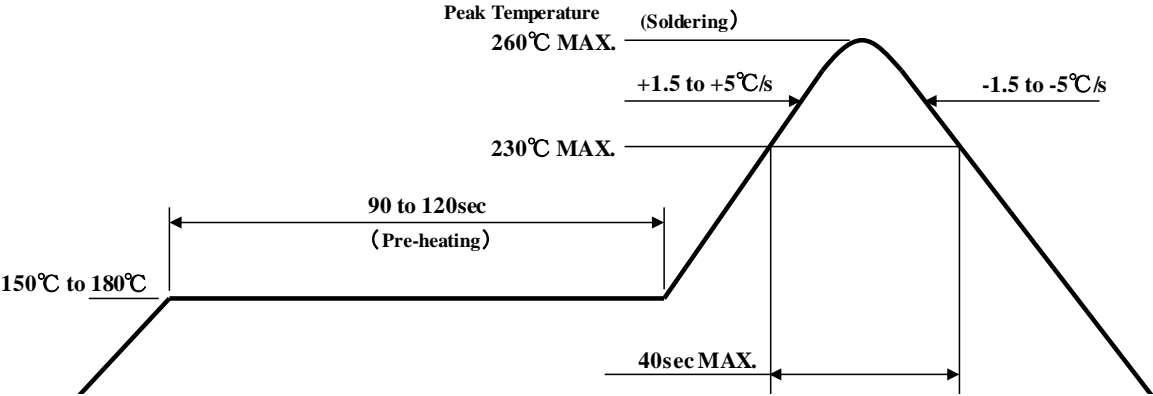
**BXMW115HGSE-300-TR**  
(Wide color gamut type)

## 【Soldering Precaution】

(acc.to EIAJ-4701/300)

1. Heat stress during soldering will influence the reliability of LEDs, however that effect will vary with heating method. Also, if components with different shapes need to be mounted together, it is recommended to set the soldering pad temperature according to the component most vulnerable to heat stress (ex. chip type LED).
2. The LEDs constituent parts do not stabilize immediately after the soldering. Any mechanical stress may cause damage to the products.  
Please avoid stacking the PCBs, or any other storage method which may cause the PCBs to bend, also prevent contact of LED with any materials.
3. The recommended temperature profile for reflow soldering is listed as the pad temperature of soldering point. This is due to the fact that temperature distribution varies on heating method, PCB material, other components in the assembly, and concentration of the parts mounted.  
Please do not repeat the heating process during reflow more than two times.

## 【Recommended reflow soldering condition】



- Note 1      Temperature Profile for the reflow should be set to pad temperature of soldering point, which is the maximum temperature for soldering.  
Lowering the heating temperature and decreasing heating time is very effective in achieving higher reliability.
- Note 2      The reflow soldering process should be done max2 times. The interval between first and second process should be as short as possible to prevent absorption of moisture to LED resin.  
Please cool down the LED temperature at room temperature after soldering, then start the second process.

## Soldering condition

## BXMW115HGSE-300-TR (Wide color gamut type)

4. If soldering manually, the peak temperature changes according to the size of land and the shape of soldering iron tip. Therefore please confirm there is no problem before usage. Also, Stanley recommends using a soldering iron equipped with temperature control and the peak temperature to be lowered.  
During the actual soldering process, make sure that the soldering iron never touches the LED itself, and avoid the LED's electrode temperature reaching above the temperature of the solder pad.  
All repairs must be performed only once in the same spot, and please avoid reusing components.
5. In soldering process, immediately after iron tip is cleaned, please make sure that the soldering iron reaches the appropriate temperature, then use it. Also, please avoid applying any types of pressure to the soldered components before the solder is cooling and hardening, as it may deteriorate solder performance and solder quality.

### 【Recommended manual soldering condition】

Temperature of iron tip	350°C max.
Soldering duration, time	3sec. max., 1 time

6. When using adhesive material for tentative fixatives, thermosetting resin or Ultraviolet radiation(UV) setting resin with heat shall be recommended.  
《Curing condition, Temperature:150°C max. / Time:120sec.max.》
7. Flow soldering (dip soldering) is not guaranteed for this product.
8. Please confirm in advance there is no problem by assessment on your side if cleaning process is necessary.  
We can not accept any quality issues caused by the cleaning process.  
As this product uses the low hardness silicone resin for the lens, please avoid cleaning to give pressure on the surface of the resin.  
Please make sure ultrasonic cleaning is not recommended for this product as well.  
We will recommend isopropyl alcohol as a solvent used for cleaning.  
Some chemicals, including Freon substitute detergent could corrode the lens or the casing surface, which cause discoloration, cloud, crack and so on.  
Please review the reference chart below for cleaning. If water is used to clean (including the final cleaning process), please use pure water (not tap water), and completely dry the component before using.

Cleaning agents	Recommended / Not recommended
Isopropyl Alcohol	✓ Recommended
Trichloroethylene	x Not recommended
Chloroethene	x Not recommended
Acetone	x Not recommended
Thinner	x Not recommended

## Handling precautions

## BXMW115HGSE-300-TR

(Wide color gamut type)

### 【For electrostatic discharge (ESD)】

LED with an InGaN die is sensitive to voltage surges generated by On/Off status change and friction with synthetic materials, which may cause severe damage to the die or undermine its reliability. Damaged products may experience conditions such as extremely high reverse voltage, decrease of forward rise voltage, deterioration in optical characteristics.

Stanley InGaN products are packed with anti-static components. However, following precautions must be taken into account upon product shipment.

### 1. Electrification/static electricity protection

In order to avoid product (die) damage from static electricity caused by unprotected handling by operator and other charged materials coming in contact with the product, Stanley recommends taking the following precautions.

- ① Do not place electrified non-conductive materials near the LED product.  
Avoid LED products from coming into contact with metallic materials.( Should the metallic material be electrified , the sudden surge voltage will most likely damage the product.)
- ② Avoid a working process which may cause the LED product to rub against other materials.
- ③ Install ground wires for any equipment, where they can be installed, with measures to avoid static electricity surges.
- ④ Prepare a ESD protective area by placing a Conductive Mattress (1MΩ MAX.) and Ionizer to remove any static electricity.
- ⑤ Operators should wear a protective wrist-strap.
- ⑥ Operators should wear conductive work-clothes and shoes.
- ⑦ To handle the products directly, Stanley recommends the use of ceramic, and not metallic, tweezers.

### 2. Working environment

- ① A dry environment is more likely to cause static electricity. Although a dry environment is ideal for storage state of LED products, Stanley recommends an environment with approximately 50% humidity after the soldering process.
- ② Recommended static electricity level in the working environment is less than 150V, which is the same value as Integrated Circuits (which are sensitive to static electricity).

## Handling precautions

## BXMW115HGSE-300-TR (Wide color gamut type)

### 【Other precautions】


1. The products are designed to achieve higher performance reliability, however, they can be influenced by usage conditions.
2. Absolute maximum ratings are set to prevent LED products from breaking due to extreme stress (temperature, current, voltage, etc.). These ratings must never be overrun even for a moment.
3. To achieve the highest performance reliability, it is necessary to take into account, factors such as forward voltage adjusted to the usage temperature condition, derating of the power consumption, and other variable factors.
4. Please insert straight protective resistors into the circuit in order to stabilize LED operation and to prevent the device from overheating.
5. Please avoid to stick foreign materials because molding resin in the products has adhesiveness.  
And please don't touch lens portion, so it cause the wire open circuit etc. when the stress hangs to the lens portion.
6. To handle with tweezers, please avoid excessive stress to this part. Excessive stress may cause non-lighting due to deformation, crack and breaking. Stanley recommends the use of ceramic tweezers, and not sharp one.
7. Please note external stress such as dropping and hitting may cause non-lighting due to deformation, crack and breaking.
8. Stanley does not recommend supersonic wave welding as it cause resonance with sealing resin and may cause breaking of conductive wire.  
Please use after affirming beforehand there is no problem.
9. The solder crack by the heat stress might be generated when the LED is soldered with the metal plate and go enough in a prior confirmation, please.
10. Please note piling PCBs may stress LEDs. It may cause non-lighting due to deformation, crack and breaking.
11. This part does not have proof for water, humidity and salt damage.  
Please use after affirming beforehand there is no problem if using on above conditions.
12. Please keep in desiccator regardless of before or after mounting not to be affected by corrosive gas when keeping products.  
Also please make sure if there is any gas which occur in surrounding area or enter from outside when using products.
13. Please check the actual performance in the assembly because the Specification Sheets are described for single LED.
14. Please refrain from looking directly at the light source of LED at high output, as it may harm your vision.
15. The products are designed to perform without failure in the recommended usage conditions.  
However, please take the necessary precautions to prevent fire, injury, and other damages from these unexpected failures.
16. The products are manufactured to be used for ordinary electronic equipment. Please contact our sales staff in advance when exceptional quality and reliability are required, when the failure or malfunction of the products might directly jeopardize life or health (such as for airplanes, aerospace, transport equipment, medical applications, nuclear reactor control systems and so on).
17. The formal specification sheets should be exchanged and signed by both parties.

## Handling precautions

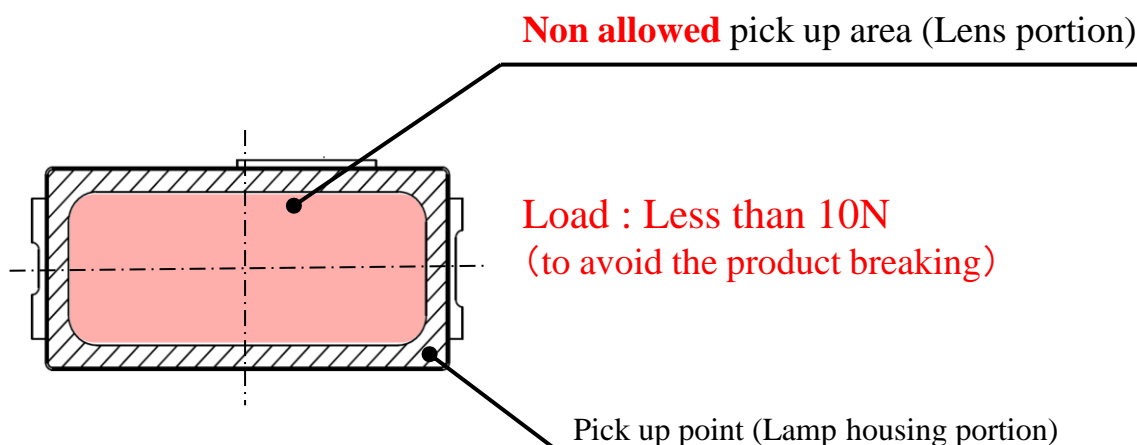
BXMW115HGSE-300-TR  
(Wide color gamut type)

### 【Handling precautions for product mounting】

#### <Recommendation>

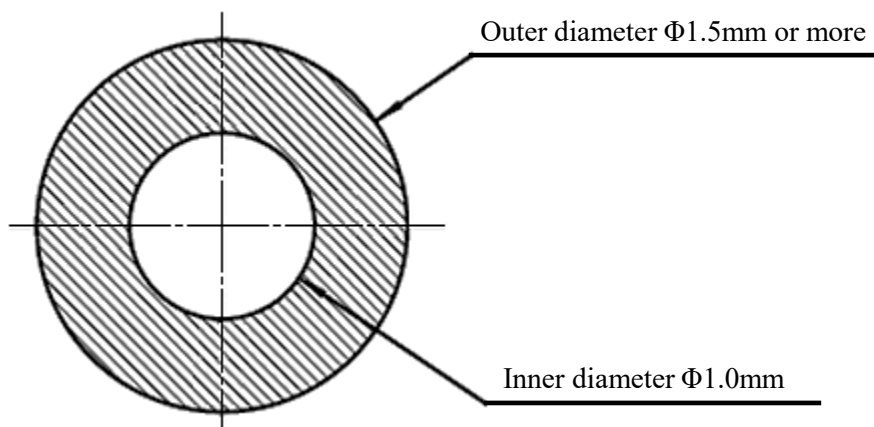
1. Picking up point with nozzle : Lamp housing of the product (  area : Shown below)

The pick up point is lamp housing only because the silicone resin used for the lens is soft.  
(If the nozzle makes contact with the lens, the products might be destroyed)



Please adjust the load, the pick up point, the nozzle diameter and etc. before mounting because the over load can cause the breakage of the lamp housing.

#### 2. Recommended nozzle shape



## Packaging specifications

## BXMW115HGSE-300-TR

(Wide color gamut type)

This product is baked (moisture removal) before packaging, and is shipped in moisture-proof packaging (as shown below) to minimize moisture absorption during transportation and storage. However, with regard to storing the products, Stanley recommends the use of dry-box under the following conditions is recommended. Moisture-proof bag as the packaging is made of anti-static material but packaging box is not.

### 【Recommended storage condition / products warranty period】

Temperature	+5~30°C
Humidity	Under 70%

In the case of the package unopened, please use within **6 months** 【Recommended storage condition】. Please avoid rapid transition from low temp. condition to high temp. condition and storage in corroding and dusty environment.

### 【Time elapsed after package opening】

The package should not be opened until immediately prior to its use, and please keep the time frame between package opening and soldering which is **【maximum 672h】**.

If the device needs to be soldered twice, both soldering operations must be completed within the 72h.

If any components should remain unused, please reseal the package and store them under the conditions described in the 【Recommended Storage Condition】 above.

This product must be required to perform baking process (moisture removal) for **at 48h (min.) to 72h (max.) at 60±5 degrees Celsius** if following conditions apply.

1. In the case of silica gel (blue) which indicates the moisture level within the package, changes or loses its blue color.
2. In the case of time passes for 672h after the package is opened once.

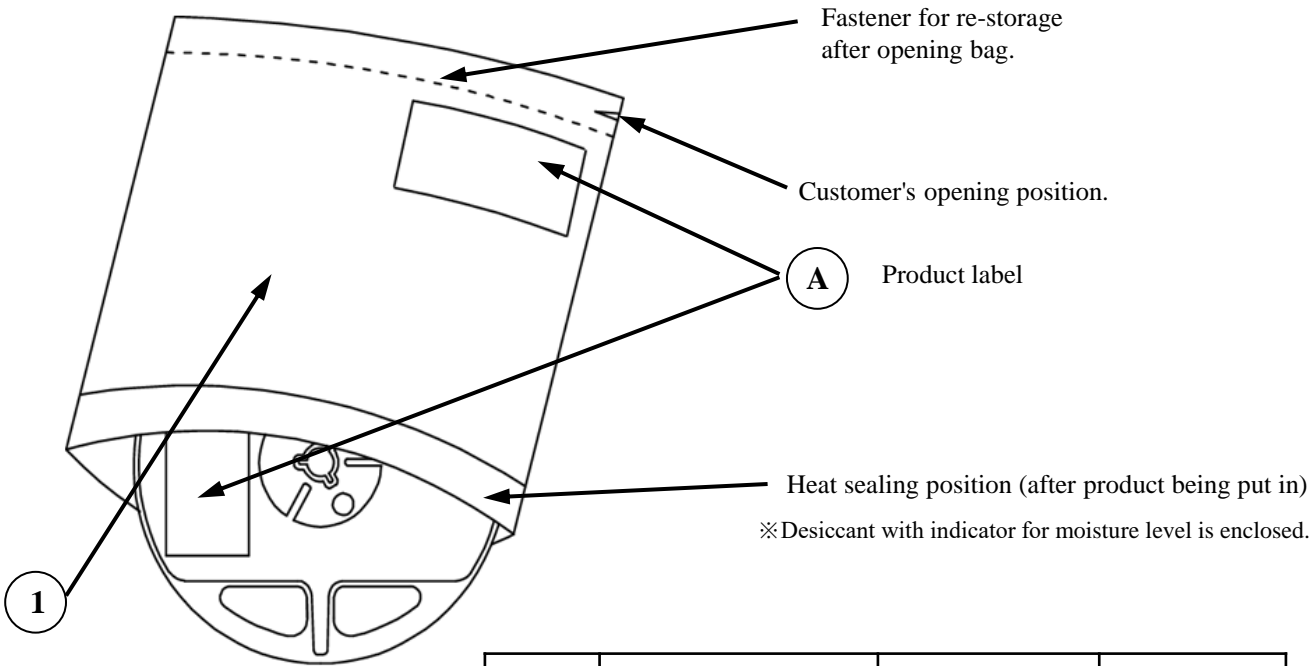
Baking process should be performed after LED having been taken out of the package.

Baking may be performed in the tape-reel form, however if it is performed with the reel stacked over one another, it may cause deformation of the reels and taping materials and later obstruct mounting. Please handle only once it has returned to room temperature. Provided that, baking process shall be 2 times max.

Packaging specifications

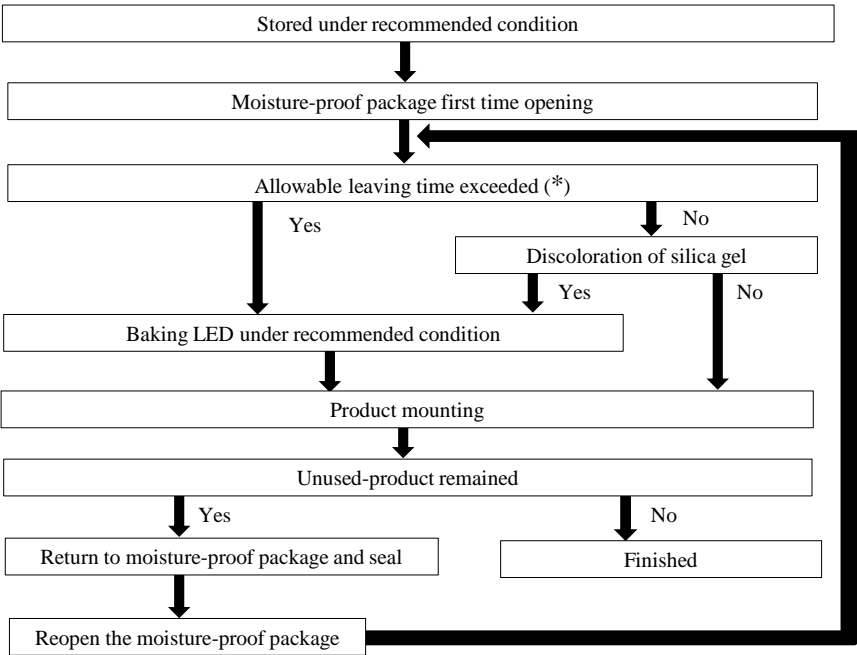
BXMW115HGSE-300-TR  
(Wide color gamut type)

【Moisture-proof packaging specification】



No.	Part name	Material	Remarks
①	Moisture-proof bag with Aluminum layer	PET+Al+PE	with ESD protection

【Flow chart-package opening to mounting】



Allowable leaving time means the maximum allowable leaving time after opening package, which depends on each LED type. The allowable leaving time should be calculated from the first opening of package to the time when soldering process is finished. When judging if the allowable leaving time has exceeded or not, please subtract the soldering time. The allowable leaving time after reopening should be calculated from the first opening of package, or from the time when baking process is finished.



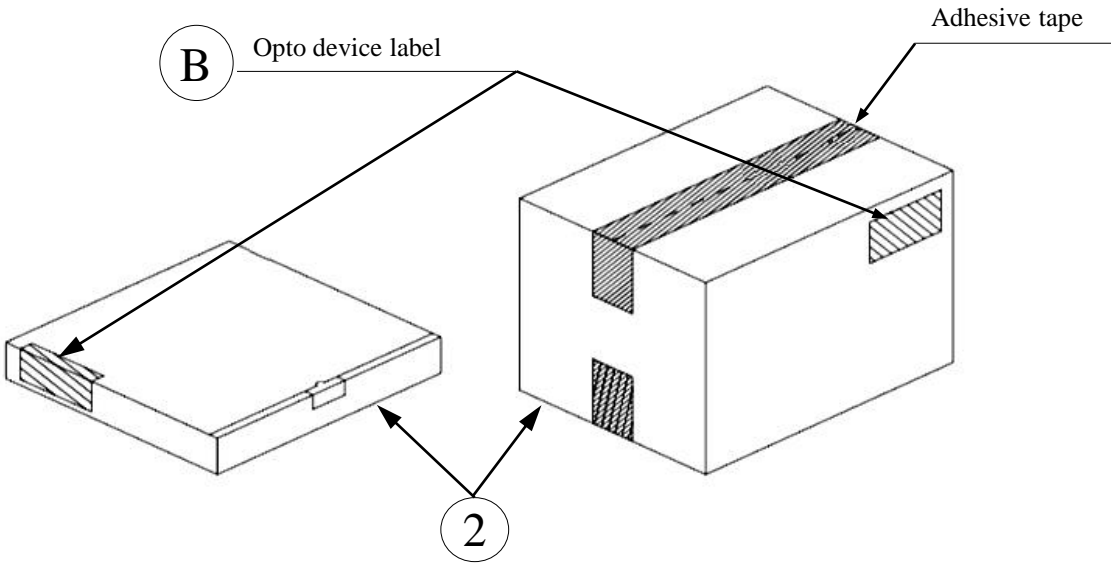
Packaging specifications

BXMW115HGSE-300-TR  
(Wide color gamut type)

【Packing box】  
(RoHS / ELV Compliant)

Box type	Outline dimension L × W × H (mm)	Capacity of the box
Type A	280 × 265 × 45 (mm)	2 reels
Type B	310 × 235 × 265 (mm)	10 reels
Type C	440 × 310 × 265 (mm)	20 reels
Type D	305 × 270 × 65 (mm)	2 reels
Type E	370 × 280 × 270 (mm)	20 reels
Type F	530 × 380 × 270 (mm)	40 reels

The above measures are all the reference values.  
The box is selected out of the above table by shipping quantity.



Type A

Material / Box : Cardboard C5BF

Type B, C

Material / Box : Cardboard K5AF , Partition : Cardboard K5BF

Type D

Material / Box : Cardboard C5WF

Type E, F

Material / Box : Cardboard BC-KA125/3CA125/KA125

NO.	Part name	Material	Remarks
②	Packing box	Corrugated cardboard	without ESD protection

Packaging specifications

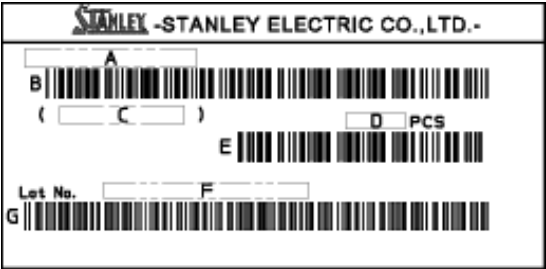
BXMW115HGSE-300-TR

(Wide color gamut type)

(acc.to JIS-X0503(Code-39))

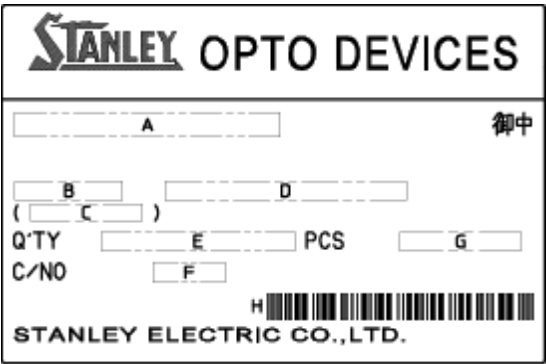
【Label specification】

A Product label



- A. Parts number
- B. Bar-code for parts number
- C. Parts code (In-house identification code for each parts number)
- D. Packed parts quantity
- E. Bar-Code for packed parts quantity
- F. Lot number & rank
- (Please refer to lot number notational system for details )
- G. Bar-code for lot number & rank

B Opto device label



- A. Customer name
- B. Parts type
- C. Parts code
- D. Parts number
- E. Packed parts quantity
- F. Carton number
- G. Shipping date
- H. Bar-code for In-house identification number

<Remarks> Bar-code font : acc.to Code-39(JIS-X0503)

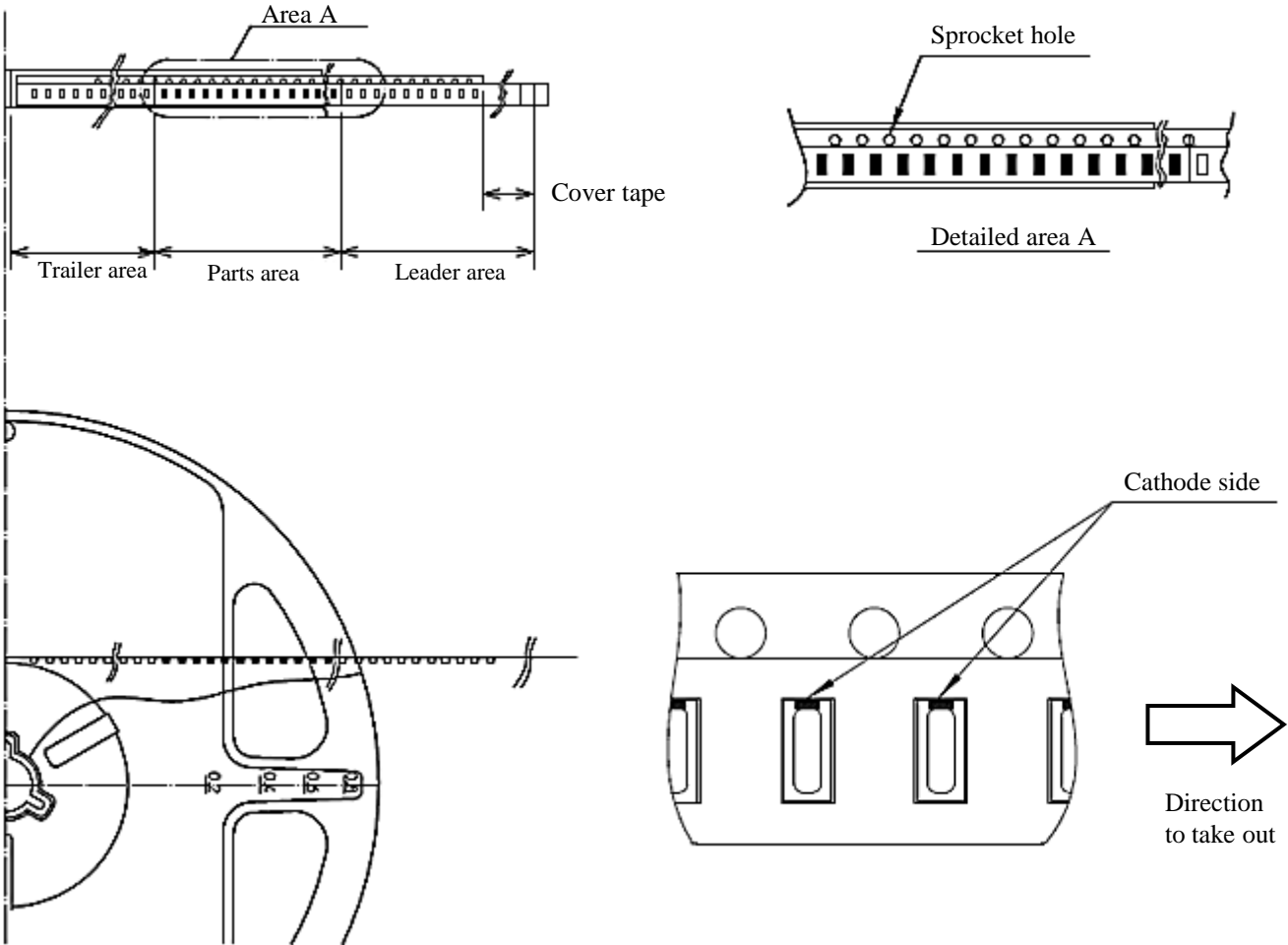
Taping and reel specifications

(acc.to JIS-C0806-03)

BXMW115HGSE-300-TR

(Wide color gamut type)

【Appearance】



Note

"-TR" means Cathode Side of LEDs; should be placed on the sprocket-hole side.

Items		Specifications	Remarks
Leader area	Cover-tape	Cover-tape shall be longer than 300mm without carrier-tape	The end of cover-tape shall be held with adhesive tape.
	Carrier-tape	Empty pocket shall be more than 25 pieces.	Please refer to the above figure for Taping & reel orientation .
Trailer area		Empty pocket shall be more than 40 pieces.	The end of taping shall be inserted into a slit of the hub.

## Taping and reel specifications

BXMW115HGSE-300-TR

(acc.to JIS-C0806-03)

(Wide color gamut type)

## 【Qty. per reel】

3,000parts/reel

Minimum Qty. per reel might be 500 parts when getting less than 3,000 parts.

In such case, parts of 500-unit-qty. shall be packed in a reel and the qty. shall be identified on the label

## 【Mechanical strength】

Cover-tape adhesive strength shall be 0.1 ~ 1.0N ( An angle between carrier-tape and cover-tape shall be 170 deg. ).

Both tapes shall be so sealed that the contained parts will not come out from the tape when it is bent at a radius of 15mm.

## 【Others】

Reversed-orientation, Up-side down placing, side placing and out of spec. parts mix shall not be held.

Empty pocket per reel shall be defined as follows.

Qty./reel	Max. qty. of empty pocket	Remarks
500	1	-
1,000	1	-
1,500	1	-
2,000	2	No continuance
2,500	2	No continuance
3,000	3	No continuance

Taping and reel specifications

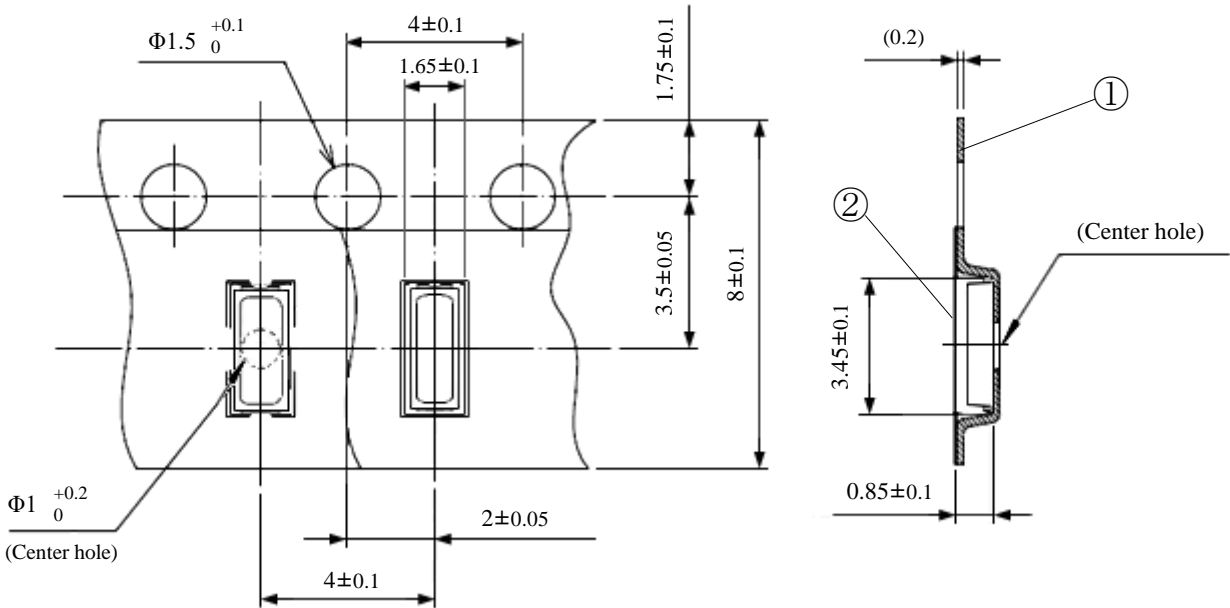
(acc.to JIS-C0806-03)

BXMW115HGSE-300-TR

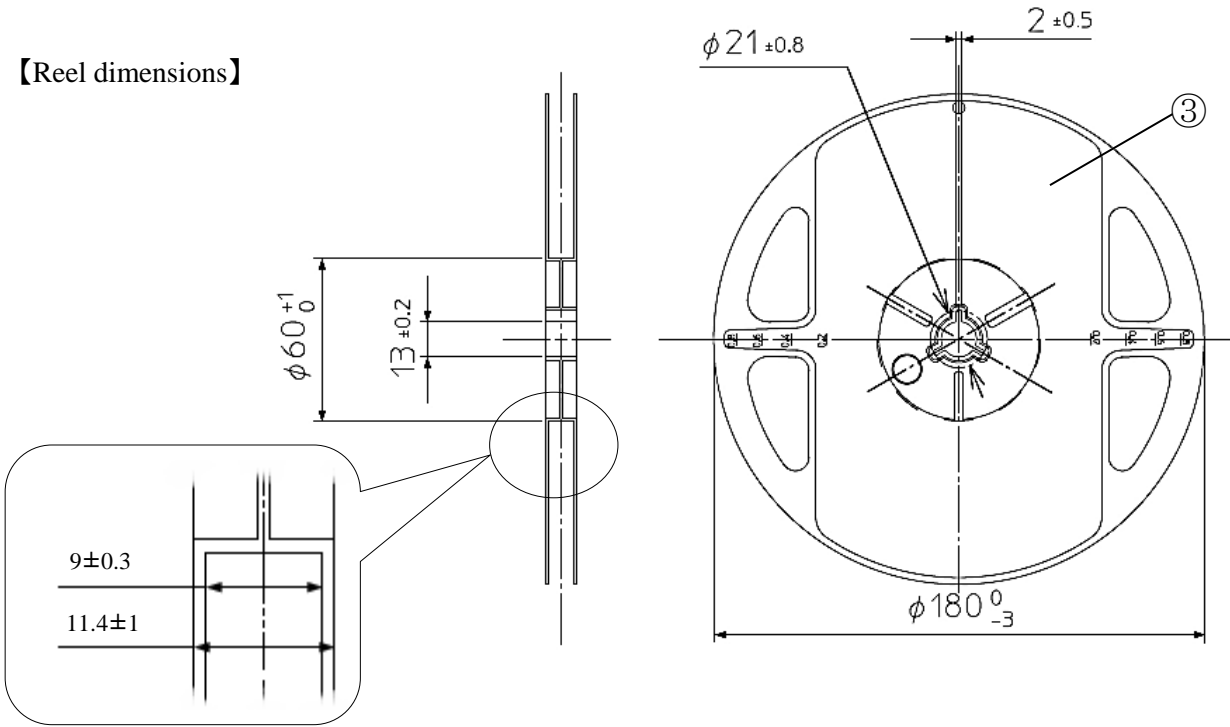
(Wide color gamut type)

【Taping dimensions】

Unit: mm



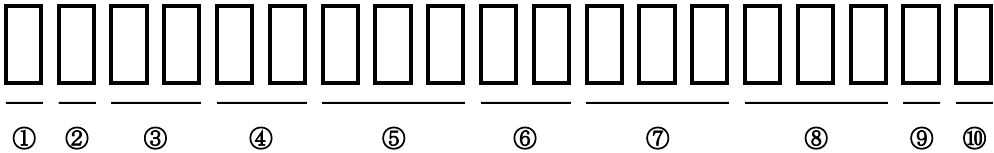
【Reel dimensions】



No.	Part name	Remarks
①	Carrier-tape	with ESD protection
②	Cover-tape	with ESD protection
③	Carrier-reel	with ESD protection

Lot number notational system

BXMW115HGSE-300-TR  
(Wide color gamut type)



- ① - 1digit : Production location (mark identify alphabet)
- ② - 1digit : Production year (The last digit of production year 2025→5, 2026→6, 2027→7, 2028→8 ...)
- ③ - 2digits : Production month (Jan. to Sep. , should be 01,02,03 ...)
- ④ - 2digits : Production date
- ⑤ - 3digits : Serial number
- ⑥ - 2digits : Tape and reel following number
- ⑦ - 3digits : Luminous flux rank  
(If only 2 digits, third digit must be dash "-"and if not identified rank, its"- -")
- ⑧ - 3digits : Chromaticity Rank  
(If only 2 digits, third digit must be dash "-"and if not identified rank, its"- -")
- ⑨ - 1digit : V<sub>F</sub> Rank (If not identified rank, its"-")
- ⑩ - 1digit : Peak Wavelength Rank (If not identified rank, its"-")

# Compliance with RoHS / ELV

## BXMW115HGSE-300-TR (Wide color gamut type)

This product is in compliance with RoHS / ELV.  
Prohibition substance and it's criteria value of RoHS / ELV are as follows.

- RoHS instruction ... Refer to following 1 to 10.
- ELV instruction ... Refer to following 1 to 4.

2011/65/EU, (EU)2015/863

No.	Substance group name	Maximum permissible concentration value
1	Lead and its compounds	1,000ppm (0.1%)
2	Cadmium and its compounds	100ppm (0.01%)
3	Mercury and its compounds	1,000ppm (0.1%)
4	Hexavalent chromium compounds	1,000ppm (0.1%)
5	PBB : Polybrominated Biphenyls	1,000ppm (0.1%)
6	PBDE : Polybrominated Biphenyl Ethers	1,000ppm (0.1%)
7	DEHP : Bis (2-ethylhexyl) phthalate	1,000ppm (0.1%)
8	BBP : Butyl benzyl phthalate	1,000ppm (0.1%)
9	DBP : Dibutyl phthalate	1,000ppm (0.1%)
10	DIBP : Diisobutyl phthalate	1,000ppm (0.1%)

# Reliability Testing Result

## BXMW115HGSE-300-TR

(Wide color gamut type)

1. Reliability testing result

Test item	Standard	Test condition	Duration	Failure
Room temperature operating life	JEITA ED-4912A	Ta=25℃ If=170mA	1,000h	0 / 20
Wet high temperature operating life	JEITA ED-4701 /100A(102A)	Ta=85℃ Rh=85% If=150mA	1,000h	0 / 20
High temperature operating life	JEITA ED-4701 /100A(101A)	Ta=85℃ If=150mA	1,000h	0 / 20
Low temperature operating life	JIS C60068-2-1	Ta=-40℃ If=170mA	1,000h	0 / 20
Wet high temperature storage life	JEITA ED-4701 /100A(103A)	Ta=60℃ Rh=90%	1,000h	0 / 20
High temperature storage life	JEITA ED-4701 /200A(201A)	Ta=120℃	1,000h	0 / 20
Low temperature storage life	JEITA ED-4701 /200A(202A)	Ta=-40℃	1,000h	0 / 20
Thermal shock	JEITA ED-4701 /100A(105A)	Ta=-40℃ 120℃ (each 15min)	1,000 cycles	0 / 20
Thermal shock operating	JEITA ED-4701 /100A(105A)	Ta=-40℃(OFF) to 85℃(If=150mA ON) (each 15min)	1,000 cycles	0 / 20
Cycled temperature humidity operating life	JEITA ED-4701 /200A(203A)	Ta=-30℃ to 80℃ 95% 8h / cycle If=120mA 5min on-off	30 cycles	0 / 20
Resistance to reflow soldering	JEITA ED-4701 /301A(301D)	Moisture Soak : 30℃ 70% 672h Preheating : 150 to 180℃ 90 to 120sec Soldering : 260℃ peak	2 times	0 / 20
Vibration variable frequency	JEITA ED-4701 /400A(403A)	200m/s <sup>2</sup> or 1.5mm amplitude 20Hz to 2,000Hz to 20Hz 4min sweep	4 cycles each direction	0 / 10
Mechanical shock	JEITA ED-4701 /400A(404A)	15,000m/s <sup>2</sup> 0.5ms 6 orientations	5 blows each direction	0 / 10
Shear strength	JEITA ED-4702C	Soldering to a test board and apply 10N to the side of the product 10s	4 cycles each direction	0 / 20
Electrostatic discharge (ESD)	JEITA ED-4701 /302(304A)	C=100pF R2=1.5kΩ ±5,000V	3 times each polarity	0 / 20
Solederability	JEITA ED-4701 /301A(303A)	245℃ 5sec Sn-3.0Ag-0.5Cu (Wetting rate of 95% or more)	-	0 / 10
Bending	JEITA ED-4702C	Soldering in the longitudinal direction of the board and push until it bends 3mm from the back side	-	0 / 5

2. Failure criteria

Item	Symbol	Condition	Failure criteria
Luminous intensity	I <sub>v</sub>	I <sub>F</sub> =80mA	Measured value < initial value × 0.5
Forward voltage	V <sub>F</sub>	I <sub>F</sub> =80mA	Measured value < initial value × 0.9, measured value ≥ initial value × 1.1
Cosmetic appearance	-	-	Notable discoloration, deformation and cracking



**BXMW115HGSE-300-TR**

(Wide color gamut type)

## Special Notice to Customers Using the Products and Technical Information Shown in This Data Sheet

- 1) The technical information shown in the data sheets are limited to the typical characteristics and circuit examples of the referenced products. It does not constitute the warranting of industrial property nor the granting of any license.
- 2) For the purpose of product improvement, the specifications, characteristics and technical data described in the data sheets are subject to change without prior notice. Therefore, it is recommended that the most updated specifications be used in your design.
- 3) When using the products described in the data sheets, please adhere to the maximum ratings for operating voltage, heat dissipation characteristics, and other precautions for use. We are not responsible for any damage which may occur if these specifications are exceeded.
- 4) The products that have been described to this catalog are manufactured so that they will be used for the electrical instrument of the benchmark (OA equipment, telecommunications equipment, AV machine, home appliance and measuring instrument).  
The application of aircrafts, space borne application, transportation equipment, medical equipment and nuclear power control equipment, etc. needs a high reliability and safety, and the breakdown and the wrong operation might influence the life or the human body. Please consult us beforehand if you plan to use our product for the usages of aircrafts, space borne application, transportation equipment, medical equipment and nuclear power control equipment, etc. except OA equipment, telecommunications equipment, AV machine, home appliance and measuring instrument.
- 5) In order to export the products or technologies described in this data sheet which are under the “Foreign Exchange and Foreign Trade Control Law,” it is necessary to first obtain an export permit from the Japanese government.
- 6) No part of this data sheet may be reprinted or reproduced without prior written permission from Stanley Electric Co., Ltd.
- 7) The most updated edition of this data sheet can be obtained from the address below:  
<http://www.stanley-components.com/en/>